



# **TECHNOCARE™ MEDISYSTEMS**

**Manufacture of Medical Equipments**



C-1310/1311, New Bombay Market, Umarwada, Surat. (INDIA)  
Tel. Fax. : +91 261 2332042 | +91 261 6569308 |  technocare9  
Email : [technocarem@gmail.com](mailto:technocarem@gmail.com) | [www.technocarem.com](http://www.technocarem.com)



# PATIENT MONITOR

## FEATURE

- ▶ 5 standard parameters: ECG, RESP, NIBP, SPO2, 1-TEMP
- ▶ Real time S-T segment analysis and ARR analysis.
- ▶ Multi-display selectable including standard, large font, trend OxyCRG dynamic
- ▶ Multi 7-lead ECG waveforms display in phase and capture dynamic waveforms.
- ▶ Large volume of tabular and graphic trends information storage and easy to recall
- ▶ Efficient resistance to interference of defibrillator.
- ▶ Up to 2 hours working capacity of built-in rechargeable battery.



## SPECIFICATIONS | ECG

- ▶ ECG: Lead mode: 5-lead (R,L,F,N,C)
- ▶ Waveform: 3 and 7 channel selectable
- ▶ Heart rate range: Adult:

**Optional-Printer, IBP, Nellcor/ Masimo SpO2, ETCO2 & CMS**

## NIBP

- ▶ Method: Digital Automatic oscillometric
- ▶ Operation mode : Manual/Automatic/continuous

## TEMPERATURE

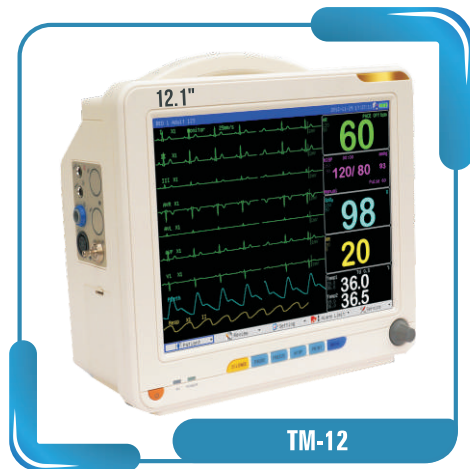
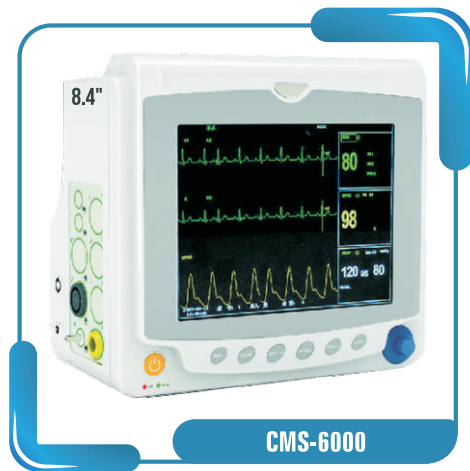
- ▶ Compatible probe: YSI or CYF
- ▶ Measurement range: 5~50°C

## RESPIRATION

- ▶ Method: Thoracic impedance between (RA-LL)
- ▶ Measurement range:

## SPO2

- ▶ Measurement range: 0-100%
- ▶ Accuracy: +2%(70-100%); 0-69% unspecified
- ▶ Alarm range: 0~100%
- ▶ Pules Rate range: 20~300bpm





# TABEL TOP PULSE OXIMETER WITH NIBP

**CMS  
5100**



**PULSE OXIMETER & NIBP**

**TM-4100  
(FDA & CE)  
+ PRINTER**



**PULSE, SPO2 & NIBP**

## SPO2

- Measurement Range : 0~100%
- Resolution : 1%
- Accuracy : 70~100%  $\pm 2\%$ , 0~69% unspecified
- Alarm range : 0~100%

## DISPLAY

- 7 segment LEDS for systolic pressure, diastolic pressure SPO2 and pulse rate
- 2.4" color LCD for waveforms, bargraphic, trend and system menu
- Weight : 1.15 kg | Dimension : 232 mm x 198 mm x 75 mm

## NIBP

- Method : Oscillometry
- Operation modes : Manual/Automatic
- Auto Measure time : 1~250 minutes adjustable, interval 5 minutes
- Measurement range : 10~270mmHg
- Over pressure protection : Yes
- Alarm : Systolic, Diastolic, Mean, PR, SPO2
- High bright LEDS display of NIBP, SPO2 and pulse rate
- High resolution color LCD for trend tabular and SPO2 waveforms

**CMS  
70A**



**ONLY PULSE OXIMETER**

display

- Manual/auto/continuous measurement of NIBP
- Adjustable audible and visual Alarms
- Up to 2000 groups NIBP data storage or SPO2 data up to 10 hours
- Suitable for adult, pediatric and neonatal patient

## PULSE RATE

- Range: 25~250bpm
- Resolution: 1bpm
- Accuracy:  $\pm 2$ bpm or  $\pm 2\%$  (select larger)
- Net Wight : 1.6 kg
- Dimension : 240 mm x 190 mm x 162 mm





# PULSE OXIMETER

## CMS-50E (Battery Rechargeable)



### PULSE OXIMETER

- ▶ 1.3 65k Color O LED display, Resolution 160 128
- ▶ SPO2 and PR display, PR Waveform and Bargraph display
- ▶ Battery voltage indicator
- ▶ 4 Direction Display
- ▶ Pulse sound function
- ▶ Alarm function; can set upper and lower limits.
- ▶ Can Store Data
- ▶ USB interface to Computer, software can analyze, store and print the data.
- ▶ Rechargeable Li battery
- ▶ Low power consumption; shut off automatically when no signal
- ▶ SPO2: 35-99% Pulse Ratio: 30-250BPM
- ▶ Charge manner : AC or PC USB port
- ▶ Can work more than 24 hours continuously

### TECHNICAL PARAMETERS

- ▶ Display format: LCD Back light : LED
- ▶ SPO2:35-99%
- ▶ Pulse ratio:30-250BPM
- ▶ Pulse wave: LCD graphic display
- ▶ Battery voltage low indication: LCD Signals.
- ▶ Power requirement: two AAA size 1.5 Alkali battery

## CMS-50C



### NT 1B HANDHELD PULSE OXIMETER

- ▶ Spo2 & Pulse rate Measurement
- ▶ Bright, Easy-to-Read Large LED Display
- ▶ Durbale, Compact and Lightweight
- ▶ Accurate, Reliable Readings During Low Perfusion and Motion
- ▶ Audible/Visual Alarms with Adjustable Alarm Limits
- ▶ Can Be Used for Spot-Check and Continuous Monitoring
- ▶ Suitable for Adult, Pediatric and Neonate
- ▶ Inbuilt Rechargeable Battery with Charger
- ▶ Size : 130 mm x 69 mm x 22 mm
- ▶ Weight : 195 gm

## NT-1B (SOLARIS USA)







# SYRINGE PUMP

## PRODUCT FEATURES :

- 3 Vein Infusion Modes: Easy Speed-Setting Mode, Time-Volume Mode, Dosage Weight Mode.
- The system automatically opens up KVO after injection(reopens vein circulation)
- The machine automatically records the settings for last injection.
- Function to Auto-Define a Syringe: complete calibration technology for syringe brand definition that ensures the compatibility of any syringe, brand and injection accuracy.



TM-110

- Voice Prompt and Voice Alarm Function: voice Prompt and alarm will sound when injection is almost done, injection is finished, preset dosage is done, an injection blockage occurs, syringe device is improperly installed, a wrong speed is set.

## SPECIFICATION :

- Syringe size : 5ml, 10ml, 20ml, 30ml & 50/60ml
- Volume Limit : 0.1ml-999.9ml
- Rate : 10ml=0.1ml to 300ml/h, 20ml=0.1ml to 600ml/h, 30ml=0.1ml to 900ml/h & 50ml=0.1ml to 1500ml/h
- Battery Backup : 4 hrs.
- Weight : 2.2 kg
- Dimension : 280mm x 210mm x 130mm



TM-609

# DIAGNOSTIC SPIROMETER



## FEATURES :

- Ultra-thin design for portable carrying, easy operation for convenient test.
- Large TFT screen to display the test result clearly.
- Measure FVC, PEF, FEV1, etc. parameters synchronously.
- Support diagnosis evidence by volume and flow rate chart display.
- With precise, credible test result, and good consistency.
- Built-in predicted value, display the testee current condition by red, yellow and green bar.
- Provide repeated measure and memorize the correlative data.
- Communication with the computer with the USB, which can calculate data, analyze trend and export.
- Built-in lithium battery, Battery power display.
- Automatic power-off when there is no operation in one minute.

CMS-SP10



DIAGNOSTIC SPIROMETER



TM-210

## FUNCTION & FEATURES

- ▶ The infusion pump has audible and visual alarm for occlusion, empty, low battery, end of infusion, door open, wrong setting etc
- ▶ HD LCD Display, high capacity words, friendly user interface, dynamically display work status
- ▶ The infusion pump is compatible with any brand of infusion sets after correct calibration
- ▶ The infusion pump can preset solution volume, which can greatly reduce the workload of nurses
- ▶ The infusion pump has two work modes: ml/h and drop/min can switch freely
- ▶ There are three levels of occlusion: high, middle and low for the pump
- ▶ The pump has purge function
- ▶ The infusion pump will automatically open up KVO as infusion is completed.
- ▶ This infusion pump also can automatically record the settings for last transfusion
- ▶ Infusion Rate : 1ml/h - 1200ml/h
- ▶ Purge Rate : 100ml/h - 1200ml/h
- ▶ Volume Limit : 0ml - 9999ml



TM-809

## PRODUCT SPECIFICATION

- ▶ Speed Range ml/h-1200ml/h (increment of 1ml/h)
- ▶ Infusion Accuracy with in  $\pm 5\%$
- ▶ High Speed Infusion 100ml/h--1200ml/h (can be calibrated)
- ▶ Volume Limit 1ml-999.9ml with increment of 0.1ml
- ▶ Infusion Volume Done 9999ml (increment of 0.1ml)
- ▶ Weight:-1.8kg
- ▶ Dimension:-140mm(L)x 157mm(W)x 220mm(H)

## DVT PUMP



TM-DVT9

## SPECIFICATIONS

- ▶ Description : Air Compressor Pressure Therapy
- ▶ Machine Size : 24\*18\*11cm
- ▶ Massage Mold : A/b/c Mold
- ▶ Range Of Press : 20-250mmhg
- ▶ Input Voltage : AC220V /50Hz
- ▶ Power Consumption : 30W
- ▶ Treating Time : 10-30 Mins
- ▶ 3 Mode For Electrotherapy

## APPLICATION FIELD

- ▶ Lymph Edema Related Therapy
- ▶ Rheumatic Osteoarthritis
- ▶ Claudication
- ▶ Muscle Atrophy
- ▶ Slimming & Contouring & Pressure Therapy
- ▶ Stimulate Blood Flow & Improve Poor Circulation
- ▶ Diabetes Foot, Detoxify & Anti Aging
- ▶ Post Surgery Recovery.



# BI-PHASIC DEFIBRILLATOR

## SPECIFICATIONS

- **TM-D101 SPO2, NIBP & Printer Optional.**
- **TM-103 AED, SPO2, NIBP, Pacemaker Optional.**
- Operating Mode : Manual, Display : 7" Colour TFT
- Waveform : Biphasic Truncated Exponential
- Energy : 2 to 200 joules in 12 steps selection
- Energy display : Displays selected and charged/delivered energy
- Synchronous Cardio Version : Energy delivery begins within 60 ms of the QRS Peak
- Charging Time : 6 seconds on Mains
- Paddle Assembly : External paddle assembly with coil retractable high voltage cable. Adults & Pediatric paddle integrated to same handle
- Check Mode : Manual check mode
- Patient Impedance range : 35 ohm to 250 ohm
- Shock Delivery : Through paddles or pads
- Battery : 12 V 4.5Ah, Rechargeable, (Sealed Lead Acid)
- Back-up time : 3 hours min. 70--100 shock of 150 Joules .
- Display area : 150 mm x 90 mm
- Dimensions : H280 x W 330 x D220 mm (Max) without Paddle
- Weight : Approx.6 Kgs.
- Printer Size : 50 X 20
- 360 Joules Optional.



**TM-103**

**TM-D101 (Basic Model)**



## AMBULATORY BP MONITOR

### SPECIFICATIONS

- |                         |  |
|-------------------------|--|
| 2.4" Color LCD Display  | - -  |
| Method Of Measurement   | - Oscillometric Method                             |
| Range Of Blood Pressure | - Systolic 50 - 260mm Hg / Diastolic 30 - 180mm Hg |
| Recording Time          | - 24 Hours   |
| Data Memory             | - Up to 350 Measurements                           |
| Communication Port      | - USB Transfer                                     |
| Battery                 | - 2XAA Size Alkaline Battery                       |
| Dimensions              | - 120mm X 70mm X 30mm                              |
| Weight                  | - 200gm.   |



**CMS-ABPM50**

### SPECIFICATIONS

- |                     |                                 |
|---------------------|---------------------------------|
| Recording time      | - 24 h ours (48 hours, option)  |
| Data transfer       | - USB Interface                 |
| Memory size         | - 2 GB (or more)                |
| Battery             | - 2 x AAA size alkaline battery |
| Dimensions          | - 110mm. x 60mm x 25mm          |
| Weight              | - 105 gm.                       |
| (excluding Battery) |                                 |



**TLC9803**





# ECG MACHINE

**12  
CHANNEL  
ECG**



**TM-E12N  
(TOUCH SCREEN)**

## FEATURES

- ▶ Simultaneous acquisition of 12-lead ECG data, real-time recording
- ▶ LCD Color Display Size : 9.0" Inch
- ▶ Graphic display of 12-lead ECG waveform
- ▶ Built-in analysis software of age which assures accurate analysis result
- ▶ Auto-measurement, auto-interpretation, waveform playback and storage of ECG data.
- ▶ User friendly operation system contributed by built-in HELP function Powerful filters to minimize interfere
- ▶ Heart rate measurement and pace-maker protection circuit
- ▶ Multi-printing formats: manul/automatic, standard 12 channel, 3 channel phis 3 rhythm lead, 6 channel, 6 channel plus rhythm
- ▶ AC, DC or built-in lithium battery power supply, alarm of battery weak and lead-off
- ▶ Paper Size : 210mm X 20m
- ▶ Optional - Touch Screen, PC Software & SD Card
- ▶ RS232 and USB interface cope with data-share or remote data management requirement (Optional)

## DIGITAL 3 CHANNEL ECG MACHINE

- ▶ Simultaneous acquisition of 12-lead ECG data
- ▶ Screen Display: 4.3 Inch LCD screen, 12 leads display and working Status display, 200 ECG Data Storage
- ▶ Measurement & Analysis: automatic measurement and analysis
- ▶ Recording Mode: 3CH, 3+1CH, 60 Sec Compressible waveform record
- ▶ Record Paper: 80mmX20/30m
- ▶ Lead (Un) connected Indicating light: Giving alarm when the patient ? cable break off or power deficiency.
- ▶ Communication Interface: USB, professional input and output interface
- ▶ Power Supply: AC 100-240V(50/60Hz), DC12V/1500mAh
- ▶ Data Storage: SD card for data storage (Optional)



**TM-E3B**

**3  
CHANNEL  
ECG**

**CMS-300G**



**3 CHANNEL ECG - 3.5" INCH LCD**

**TM-E6 (TOUCH SCREEN)**



**6 CHANNEL ECG - 7.0" INCH LCD**

**TM-E6A (TOUCH SCREEN)**



**6 CHANNEL ECG - 4.3" INCH LCD**



# COMPITABLE ETCO2 SENSOR



**Sidestream ETCO2 Sensor**  
**TM-SE1**

Available for Philips  
BPL, Schiller, L&T, Contec



**Mainstream ETCO2 Sensor**  
**TM-ME2**

<b>Transducer Type</b>	More affordable and economical mainstream CO2 Sensor
<b>Principle of Operation</b>	Non-dispersive infrared (NDIR) single beam optics, dual wavelength, no moving parts.
<b>Energy Emitting Device</b>	High efficiency IR source
<b>Energy Detecting Device</b>	Frequency stable thermopile
<b>CO2 Measurement Range</b>	0% to 20% (0 to 150 mmHg)
<b>CO2 Resolution</b>	0.1 mm Hg 0 to 49 mm Hg / 0.2 mm Hg 50 to 150 mm Hg
<b>CO2 Accuracy</b>	+2 mm Hg @ < 5.0% CO2 (at BTPS) / < 10% of reading @ > 5.0% CO2 (at BTPS)
<b>Dimensions</b>	50mm x 22mm x 36mm < 40g
<b>WEight</b>	
<b>Respiration Rate Range</b>	3 to 150 Breaths Per Minute (BPM)
<b>Respiratory Rate Accuracy</b>	1% of reading + 1 breath
<b>Calibration</b>	no routine user calibration required. An airway adapter zero is required when changing to a different style of airway adapter.
<b>Date Interface</b>	Highly configurable serial digital interface (TTL/RS232 Level)
<b>Date Output</b>	CO2 gas concentration (mmHg), End-tidal CO2, Inspired CO2, Respiratory Rate.
<b>Input Voltage</b>	5.0 V ± 5%
<b>Power Consumption</b>	1000m W
<b>Warmup Time</b>	20 seconds
<b>Response Time</b>	28ms
<b>Operation Temperature</b>	5°C to 55°C
<b>Shipping/Storage Temp. Range</b>	-40°C to 70°C

## FETAL DOPPLER

### SPECIFICATION

LCD Display Size 45mm x 25mm  
 Ultrasound probe solid durable, anti-shock, anti-falling down  
 Ultrasound frequency: 2/2.5/3 MHz ± 3%  
 Measuring Range - 50-240 BPM | Humidity: 0-85%  
 Ultrasound intensity: < 2.5 Mw/cm² | Temperature: 5°C-40°C  
 Rechargeable Ni-H battery (9V)  
 Size - 135mm X 95mm X 35mm  
 Weight - 500gm.  
 (Including Battery)





# FETAL MONITOR



## MADE IN KOREA FDA & CE APPROVE

### MAIN FEATURES

- 7" wide TFT color LCD display
- Up to 150 patients data saving
- Fetal heart sound play and record in PC
- Rotation screen
- Waterproof Probe
- GE/Philips Paper Compatible
- Interpretation Function
- Multiple language support
- Built-in quick guide (LCD Type) Waterproof probe
- Twins Probe Available

### SPECIFICATIONS

- **Power Consumption** : <20W
- **Dimension** : 96 mm (H) X 326 mm (L) X 276 mm (D)
- **Net Weight** : 5.5 KG
- **Working Temperature** :10-40 C, Relative Humidity 10-80%
- **External Link** : RS-232C
- **Trend** : USB Data Saving
- **PC Interface (Central Monitoring System)**
- **Optional** : Rechargeable Battery

### MAIN FEATURES

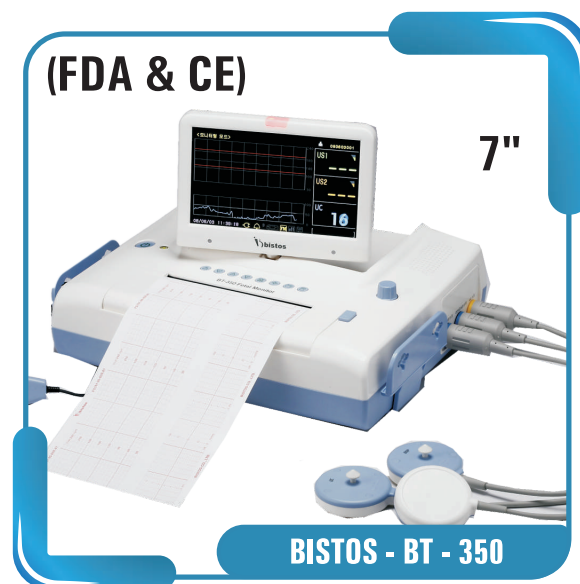
- 8.4" colorized LCD large Screen
- The world's advanced DSP technology Double event marks
- Three-in-one probe, reduce the line winding. Code-operation, easy and convenient
- 12 Hours Data & Waveform Storage and review
- Twins monitoring Function Option.
- Built in PC Network can be connected to the central monitoring system. (Optional)

### TECHNICAL PARAMETERS

- Probe: 9 wafer, wide wave beam, Pulse working mode high sensitivity
- Ultrasound Intensity: <5mW/cm<sup>2</sup>
- Recorder: Thermal Printer
- Recorder Paper: Z-fold, thermal paper
- Printing width: 112 m.m.
- **Toco Rang** : 0-100 (relative unit)
- **Display** : FHR, TOCO, FM, Mark, Time, Freeze, Replay
- **Power** : AC 220V, 50HZ

### SPECIFICATIONS

- **Power Consumption** : <20W
- **Dimension** : 320 mm (L) X 260 mm (W) X 80 mm (H)
- **Net Weight** : 3.2 KG







# AUTO CPAP & BI-PAP



- Auto-adjusting pressure for personalized treatment during sleep;
- More than 20hr real time data and more than 1 year used records can be saved;
- Showing airflow and pressure waves on screen;
- Huge display, 3.5" TFT Screen, show airflow and pressure on screen;
- USB port for data communication;
- EPR(expiratory pressure relief);
- Auto-Leak Compensation;
- Auto-Altitude compensation;
- Alarm for cut down the power;
- Overheating protection;
- Use reports: better month use report.

## AUTO-CPAP

## TECHNICAL SPECIFICATIONS

- Dimensions : 156mm x 248mm x 108mm,
- 313x194x112 mm(with InH2 TM heated humidifier)
- Weight: < 2kg
- Mode of Operation: continuous
- AC Power Consumption: 100-240VAC, 50/60 Hz
- Pressure Range : 2 to 25 hPa (in 0.5hPa increments)
- Pressure Stability: 2 to 25 hPa ( $\pm$  0.5 hPa)
- Sound Pressure Level: < 30 dB
- Maximum Flow: > 15 LPM
- Pressure Display Accy:  $\pm$ 0.5 hPa



## BI-PAP



TM-V07

## DIGITAL VIDEO COLPOSCOPE

- Imaging system from 1/4" SONY CCD Image Sensor which creates brilliant-resolution images.
- Images can be displayed, captured and printed in real time digital camera provides step free continuous zoom and focus, electric green filter removes red from image with no loss of light.

- Pixel: 83,00,00
- Minimum working distance: 100mm-350mm
- Magnification: 1-72
- Focusing: auto/manual
- output interface: VIDEO PAL/NTSC
- Lens resolution: 1/4 super color CCD
- Horizontal resolution over 470 lines
- Vertical resolution- over 350 lines

- Mode: green, black/white, indoor, outdoor, normal
- Freeze: auto/manual
- SNR: 50dB
- Minimum illuminance: 0.05Lux
- White balance: Auto/Manual
- Light source: Multipoint surrounded high-brightness
- White cold light source
- Video O/p - Pal / NTSC 1.0vp - P75



# ACCESSORIES



## TM-1 - SINGAL CHANNEL ECG

### SPECIFICATION

- ▶ With Rechargeable Battery (Battery Backup 3 Hrs).
- ▶ Digital Filter, Digital ECG, Thermal Printer.
- ▶ Roll Size 50 mm X 20 Mtr.



## TM -4 - FOUR CHANNEL ECG

### SPECIFICATION

- ▶ With Rechargeable Battery (Battery Backup 2 Hrs).
- ▶ Digital Filter, Digital ECG, Thermal Printer.
- ▶ Roll Size 105 mm X 20 Mtr.



## DIGIDOP



## FETALDOP



## 10 LEAD ECG CABLE



## 5 LEAD ECG CABLE



## SPO2 SENSOR



## NIBP CUFF



# INTENSIVE CARE WARMER

TM-WR02



## SILENT FEATURES

### EASY TO USE

As technology advanced, we have kept the Warmer simple & easy to use with one touch controls.

### FOCUSED HEATING

The heater with reflector makes it easier to work with the baby by efficiently providing even heat distribution across the cradle and not into the surrounding environment.

### AIR CONTROL MODE

Air control is an electronic feedback system which functions as a thermostat to maintain a constant temperature of baby cradle by regulating the heat output of Radiant Warmer. It Also acts as a WATCH DOG as Air over temperature cuts off heater even if the Warmer is operating in Servo mode.

### MANUAL MODE

The Manual mode allows the Warmer to be kept 'baby ready' without nuisance alarms. When needed the Warmer provides safe, powerful & controlled warming to restore the temperature drop experienced by the baby immediately after delivery.

## TECHNICAL SPECIFICATION

- ▶ **Power Source** : 230V AC, ±10%, 50Hz.
- ▶ **Light Source** : LED Light to examine babies.
- ▶ **Heater Capacity** : 600 Watts.
- ▶ **Power Consumption** : 800 Watts at 100% Heater power.

## SERVO CONTROL MODE

Servo control is an electronic feedback system which functions as a thermostat to maintain a constant temperature at the site of Skin Probe by regulating the heat output of Radiant Warmer maintaining a constant abdominal Skin temperature between 36.5 & 37.0° C is the simplest way to provide a "thermoneutral" environment, minimizing the no. of calories needed to maintain normal body temperature & reducing the risks of cold stress or overheating. Servo control is the only acceptable method of heat regulation for the infant cared for under a Radiant Warmer.

## INFANT WARMER (SKIN / MANUAL)

Skin Temperature displayed on 1 "bright Red LED display.  
Set temperature displayed on separate bright Red LED display.  
Two modes of Warming i.e. Skin, Air & Manual.  
Heater output in 10 equal steps In Percentage.  
Programmable Heater power & Time in Manual mode.  
Individual LED for selection for mode (Skin, Air & Manual).

## APGAR TIMER / ATTEND BABY ALARM

### PROGRAMMABLE MUTE TIME

**SET TEMPERATURE RANGE : SKIN 25° C-39° C**





# POWER LED PHOTOTHERAPY



**TM-US**



**TM-DSP**

## UPPER SURFACE LED STAND

12 Pc. Hi power LED provides to cover the bed area and for effective Phototherapy treatment. No ultraviolet rays ensures minimize the UV exposures. No infrared rays ensures minimize the water loss. Adjustable Height - Conveniently allows you to control Radiance levels on the neonate and different types of cradle. Convenient Tilting of Source Unit, Height Adjustment with Single hand and Castor with elegant maneuvering helps to place the system at different positions, at user convenience. Lamp usages hours greater than 45,000 hours ensures no need of frequent change of lamp.

## DOUBLE SURFACE LED PHOTOTHERAPY

- ▶ Time Totalizer (Optional).
- ▶ Power LED's emitting blue light in 450-470 nm.
- ▶ Long Life > 45,000 hrs.
- ▶ Intensity :  $>25 \mu\text{W} / \text{cm}^2 / \text{nm}$ .
- ▶ M.S. Fabrication with powder coated paint.
- ▶ Operation Voltage : 100 - 250 V AC, 50Hz.

**TM-UST  
(SINGLE SURFACE)**



**LED PHOTOTHERAPY STAND WITH TROLLY**

**TM-WR01  
(SINGLE PROBE)**



**FIXED CRADLE BABY WARMER**



**OXYGEN HOOD**



**LARYNGUSCOPE**



**SILICON AMBU BAG**



# DIGITAL BABY SCALE



**3 IN 1 SCALE  
TM - 5S**

## SPECIFICATIONS

- Power Supply : AC 220V
- Max Weight Capacity : 300 KG
- Platform Size : 22 X 18 X 4
- Total Height : 32 Inch
- For Adult Pediatric & Neonate
- 2 Hours Battery Backup

**TM - 7S  
BABY SCALE**

## SPECIFICATIONS

- Power Supply : AC 220V
- Max Weight Capacity : 30 KG
- For Neonate Use Only
- 2 Hours Battery Backup



# SUCTION MACHINE

## SPECIFICATIONS

- Power Supply : AC 220V,  $\pm 22V$ ,  $05 \pm 1Hz$
- Max Negative Pressure :  $> 0.09$  Mpa
- Noise :  $< 60$  db (A)
- Input Power :  $< 180$  VA
- Flow Rate :  $> 20L/min$
- Jars Capacity : 2500mL/pc, 2 Pieces.

**TM 7A-23D**

## SPECIFICATIONS

- Power Supply : AC 220V,  $\pm 22V$ ,  $05 \pm 1Hz$
- Max Negative Pressure :  $> 0.075$  Mpa
- Noise :  $< 60$  db (A)
- Input Power :  $< 90$  VA
- Flow Rate :  $> 18L/min$
- Jars Capacity : 1000mL/pc, 1 Pieces.

**TM 8E-B**



**FDA & CE  
MADE IN ITALY**



**ASPIRET**





801A



WHEEL CHAIR

801B



WHEEL CHAIR - 801B

801C



WHEEL CHAIR - 801C

801D



WHEEL CHAIR - 801D

DIGITAL THERMOMETER

DT01



FLEXIBLE THERMOMETER

DT02

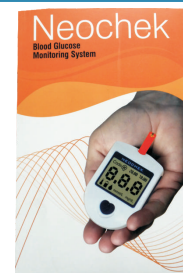


INFRARED THERMOMETER

DT03



GLUCOSE MONITOR



303A



DIGITAL SCALE

302C



BIG DISPLAY SCALE

125D



MECHANICAL DISPLAY SCALE

TM-BP 109



DIGITAL ARM BP

ULTRA SONIC NEBULIZER

TM6



COMPRESSOR SMALL NEBULIZER

TM7



COMPRESSOR BIG NEBULIZER

TM5



BLOOD PRESSURE MACHINE

TM-BP 110





# ETCO2 MONITOR

## ETCO2 MONITOR

- ▶ The TM 56 monitor supports the display of two waveforms and up to eight parameters using a 14.2 cm (5.6 in) LCD.
- ▶ Standard with sidestream ETCO2, easily change to mainstream by advanced order.



TM-56

## ETCO2

### PRINCIPLE OF OPERATION

- ▶ Solid state sidestream module. Single beam, non-dispersive infrared (NDIR) absorption, ratiometric measurement.

### INITIALIZATION TIME

Capnogram within 10Sec., Full specification within 60 sec.

- ▶ Routine calibration is not required. 8 sec zero performed when power on or ambient temperature changing too faster.

### SAMPLING FLOW RATE

- ▶ 100 ml/min (can be set from 50 to 200ml/min). with SPO2 & Respiration

### PRINCIPLE OF OPERATION

- ▶ Red/Infrared absorption.

## INFUSION FLUID WARMER

- ▶ Display Show the Temperature
- ▶ Use Ceramic Heater
- ▶ Digital Auto Controller Temperature
- ▶ No Need Programing

## APPLICATIONS

Routine transfusion.  
Low flow rate infusion in ICU.  
Transfusion exchange High calorie infusion

## SPECIFICATIONS

Model:- TM-BW9

Tube size:- 3.0-4.0mm

Flow Rate

2-5.3ml./min., Suitable speed of Infusion Fluid  
40-80 Drop/min.

Power

Ac-220w., 60Hz, 70w

Liquid Temperature At The Entrance 15c.- 25c.

Liquid Temperature At The Exit 30c.- 41c.

Packing Dimension:- 36.5x15.5x12.5cm

Weight : 600g



TM-BW9





# OXYGEN CONCENTRATOR



JAY-5W

## DOUBLE FLOW

### SPECIFICATION

- Flowrate: 0-5L/min, Purity: 93%±3%
- Outlet Pressure(Mpa): 0.04-0.07
- Sound level (dB): <50
- Power: AC220V±10%, 50/60±1Hz;
- Power: <480W
- Timer: accumulating timing; present timing
- Alarm: Power failure, High & Low pressure, High temperature
- Net Weight: 25kg
- Size (mm): 365 x 375 x 600

### FEATURE

- PSA (Pressure Swing Absorption) technology
- Adjustable flowrate
- Large LCD display for : accumulating timing
- present timing: from 10min to 40 hrs.
- Digital: Pressure, Temperature
- Maintenance reminding
- Nebulizer

### OPTIONAL

- SpO2
- Low Purity alarm: When oxygen purity is above 92%, it will give green light; When the purity is between 85% it will give
- Yellow light; when purity is below 73%, it will give red light; Maintenance alarm: Alarm for maintenance will be heard after 3000 hours of operation



JAY-5

## SINGLE FLOW

### Specification For Jay-1 (portable Oxygen Concrtator)

- It Can Be Run By Car Adapter, Continous Flow, Light Weight.
- Dc12v, Lithium Battery (one Hour), 220v-240v Or 110v
- 

### Specification

- Flowrate: 1-5lpm, Purity: 93%~38%
- Sound Level (db): <45db
- Net Weight: 6kg
- Size (mm): 350 X 190 X 320mm
- Optional :- Car Adapter, Lithium Battery, Battery



JAY-5WS

## DOUBLE FLOW WITH SP02



JAY-1

## PORTABLE CAR OXYGEN CONCENTRATOR (RUN BY BATTERY)





## LED OT LIGHT

### Technical Data

Intensity : 1,20,000 lux | Size of light field : 12-13 cm

Colour temp : 4000-5000k | Color reduction index : 93 RA

Led life : >45000 hrs | Number of led : 19 x 4

Diameter of light : 500mm | Brightness control : digital 9 steps

Power supply : 220v/50 hz ac

Focusing : Adjustable



Electric Operation Table



# TECHNOCARE™ MEDISYSTEMS

## Manufacture of Medical Equipments

C-1310/1311, New Bombay Market, Umarwada, Surat. (INDIA)  
Tel. Fax. : +91 261 2332042 | +91 261 6569308 |  technocare9  
Email : [technocarem@gmail.com](mailto:technocarem@gmail.com) | [www.technocarem.com](http://www.technocarem.com)